



## Vintage Lister Engine Dating Information

### Lister engine serial number date guide for all models from beginning of production up to 1951.

Year	Petrol (excluding D & F)	D & F Engines	G1 & G2 Engines	Diesel CD	Diesel CE	Diesel CS Types	Diesel JP 27-3, 38-4
						3-1, 5-1, 9-1 & 18-2	
1909	2100		5/---			CS.....	50/---27/3
1910	2220		10/---				60/---38/4
1915	11982						
1920	23708						30/3 even thous.
1925	44844						40/4 odd thous
1926	53300	80000					
1930	208811	92763				116	
1931	216464	98000				1781	1157
1933	222841	104729		350006	380001	7318	1949
1935	230010	115469	500	351713	381161	13902	3338
1936	233999	123609	756	353086	381924	18345	4964
1937	238316	131694	1583	354453	382641	22717	338
1938	242858	140208	2470	356070	383498	28255	2538
1939	245762	148945	3158	356671	384117	32525	3376
1940	248820	157357	4246	357598	384769	36288	3849
1941	252369	164752	5501	358300	385352	40499	7723
1942	254677	172208	6690	359023	385861	43279	10655
1943	256489	180177	8072	359545	386517	45519	14433
1944	258013	186833	9486	360198	387120	47867	17428
1945	258824	192330	10574	360561	387862	49766	25308
1946	260928	199156	11538	361100	388449	52522	27502
1947	262273	Jan-70	12201	361728	388450	56151	28785
1948	263706	1/13839	12912	362383	389052	60137	29654
1949	268038	1/24906	14023	363097	389547	64867	31259
1950	272806	1/41652	15170	363777	390733	73328	33096
1951	275860	1/58715	16168	365064	392012	85082	35043

N.B:- Types 3.5-1, 6-1, 12-2, 21-2, 30-1 and 40-4 are the same as types 3-1, 5-1, 10-2, 18-2, 27-3 and 38-4 at the higher speed.

### Lister engine serial number date guide from 1952 up to 1981.

## LISTER ENGINE NUMBERS

The following revised method of numbering for Lister Engines was introduced on 1st January, 1952

- (a) As from 1st January each year, all engine numbers to start from 1 for each type.
- (b) Followed by the type of engine—e.g. A, 6-1, JP3, FR2, SL1, HA6, etc. Note CD and CE engines are not included in this scheme.
- (c) The method of cooling and, in the case of paraffin engines, the fuel, is then indicated:—
 

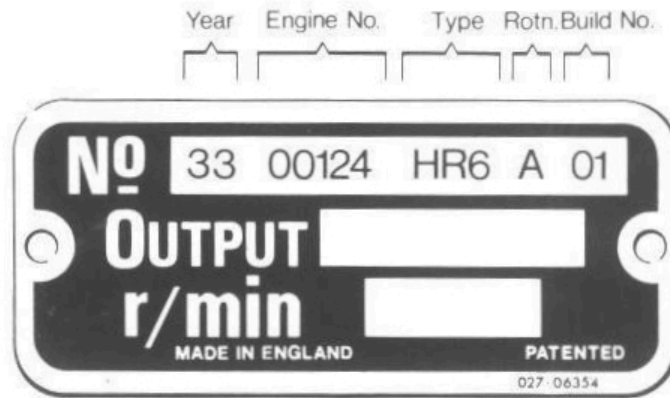
hopper cooled	...	...	...	...	H
radiator cooled	...	...	...	...	R
tank cooled	...	...	...	...	Nothing
paraffin engines	...	...	...	...	K
- (d) Reverse rotation engines are indicated by the letter " Z " following the letter denoting cooling.
- (e) After the above, the figure 2 will denote 1952, the figure 3, 1953. 1960 will be figure 10, 1961 figure 11, and so on.

Examples:—

- (a) D type hopper cooled paraffin engine. 150th engine built in 1952. Engine number 150 DKH2.
- (b) FR4 tank cooled reverse rotation engine. 187th engine built in 1963. Engine number 187 FR4 Z13.

The specification number is NOT recorded on the engine number plate.

Lister engine serial number date guide from 1982 up to 2000.



Sample engine number plate